



**OFFICE OF  
SCHOOL TRUST LANDS**

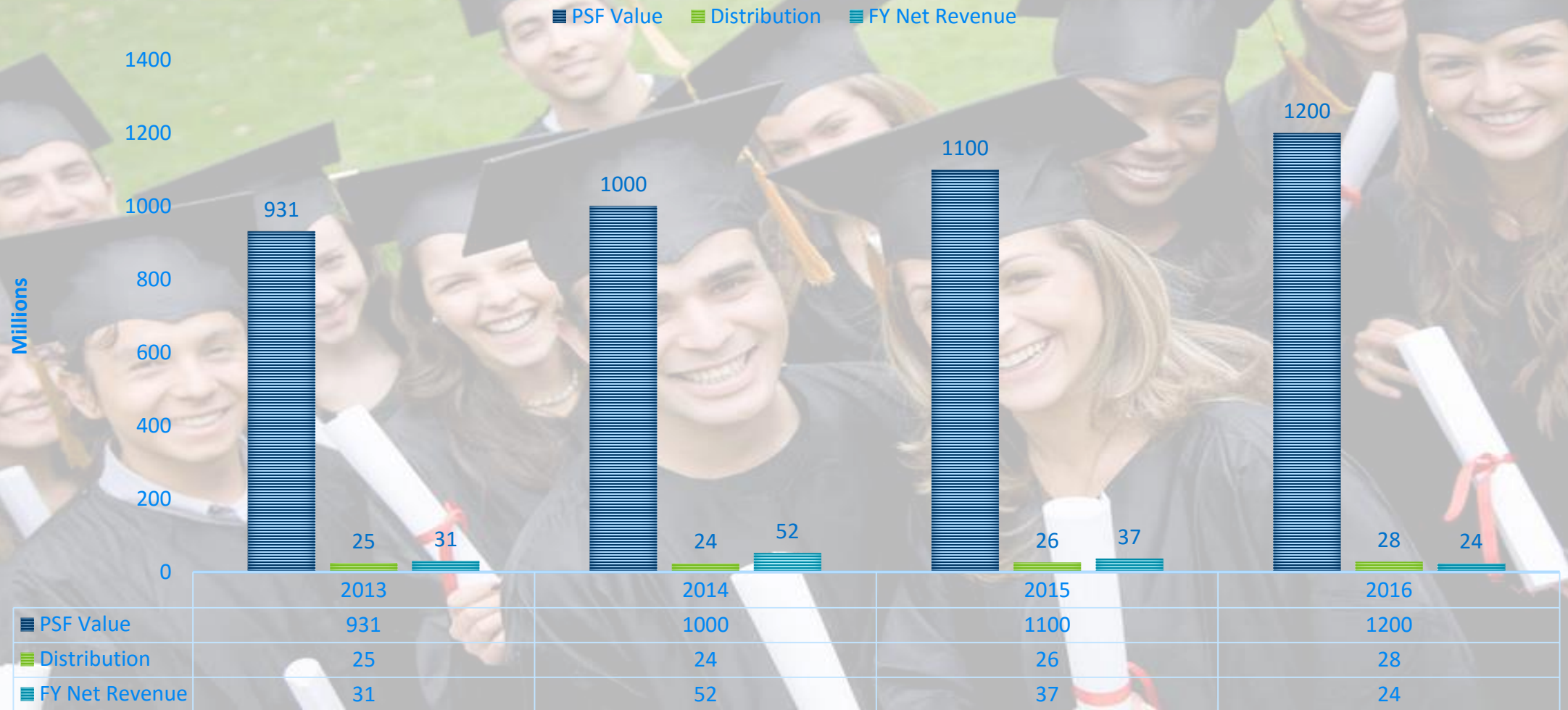
## **DIRECTOR'S UPDATE**

Legislative Permanent School Fund Comm.  
February 13, 2017

# AGENDA

- **FY16 Revenues & Expenditures**
- **FY16-17 Accomplishments**
- **FY18 STL Office Budget and Work Plan**
- **UPDATE – BWCAW Hybrid Land Exchange & Land Sale**

# PERMANENT SCHOOL FUND



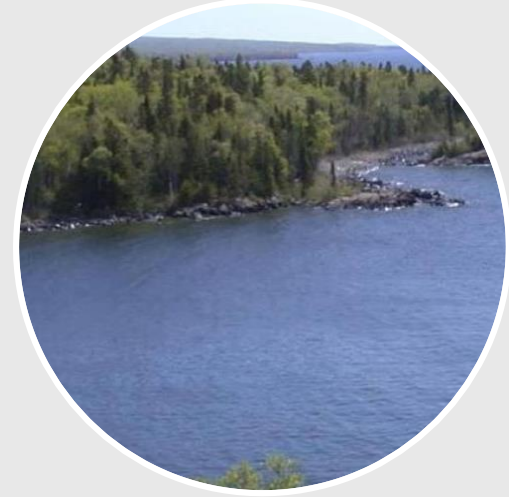
# FY16-17 ACCOMPLISHMENTS



Program Evaluation  
Forest Certification



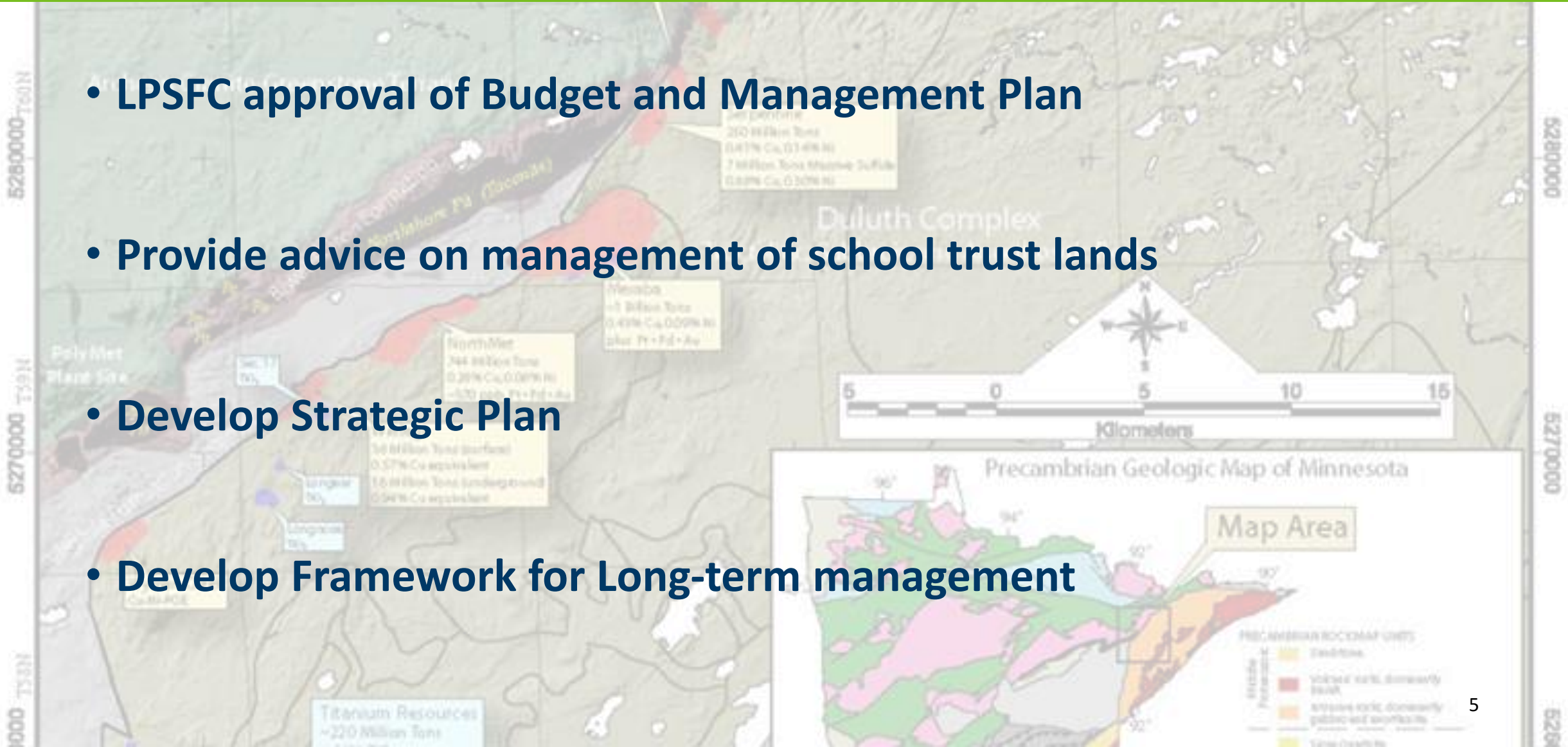
Construction Aggregate  
Asset Evaluation



Real Estate Asset  
Inventory and Analysis

# FY18 BUDGET & ANNUAL PLAN

- LPSFC approval of Budget and Management Plan
- Provide advice on management of school trust lands
- Develop Strategic Plan
- Develop Framework for Long-term management



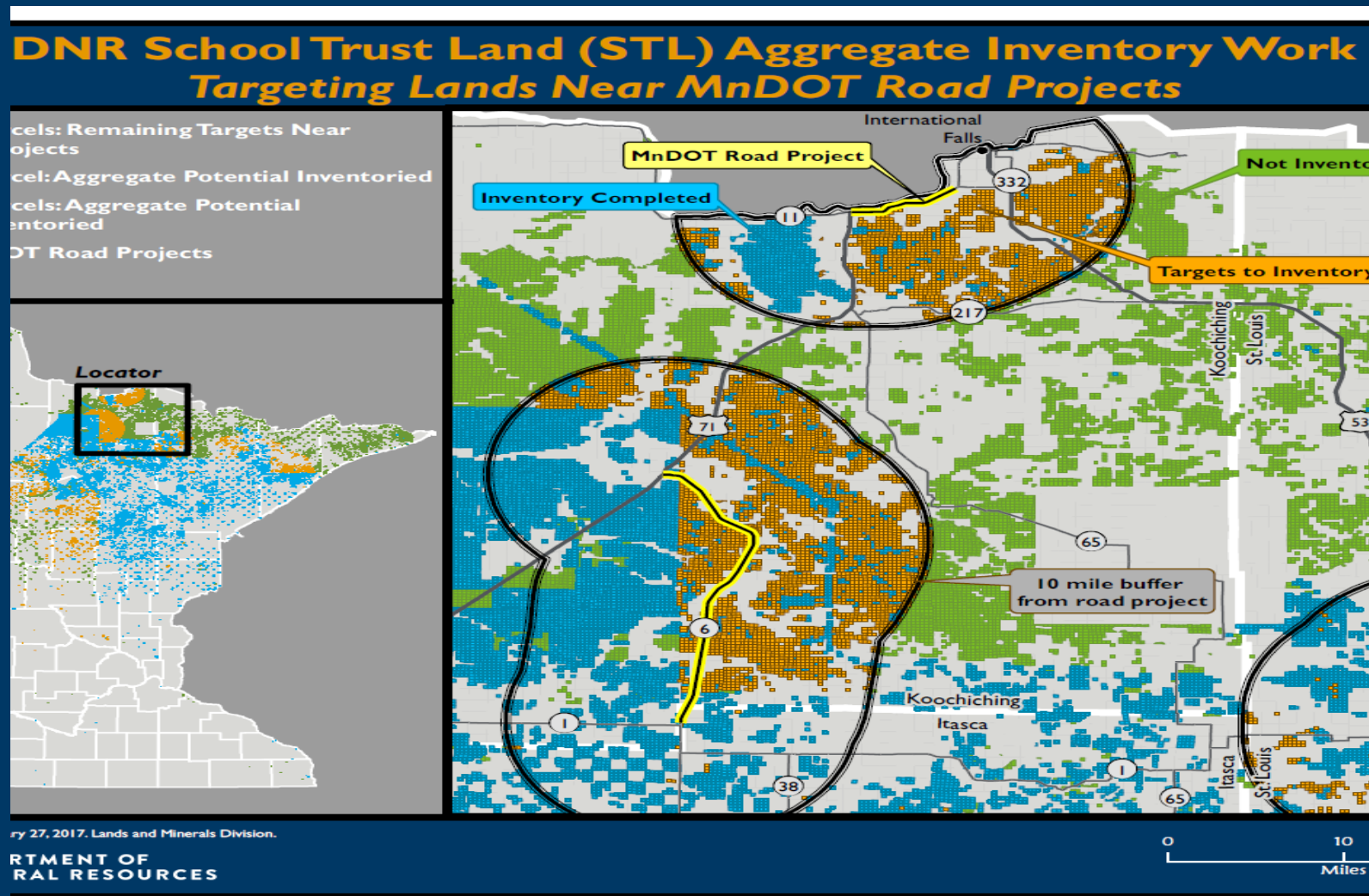
# FY18 WORK PLAN - PREVIEW

- Phase 2 – Dual Certification Study
- Woody Biomass program concept
- School Trust Asset Valuation

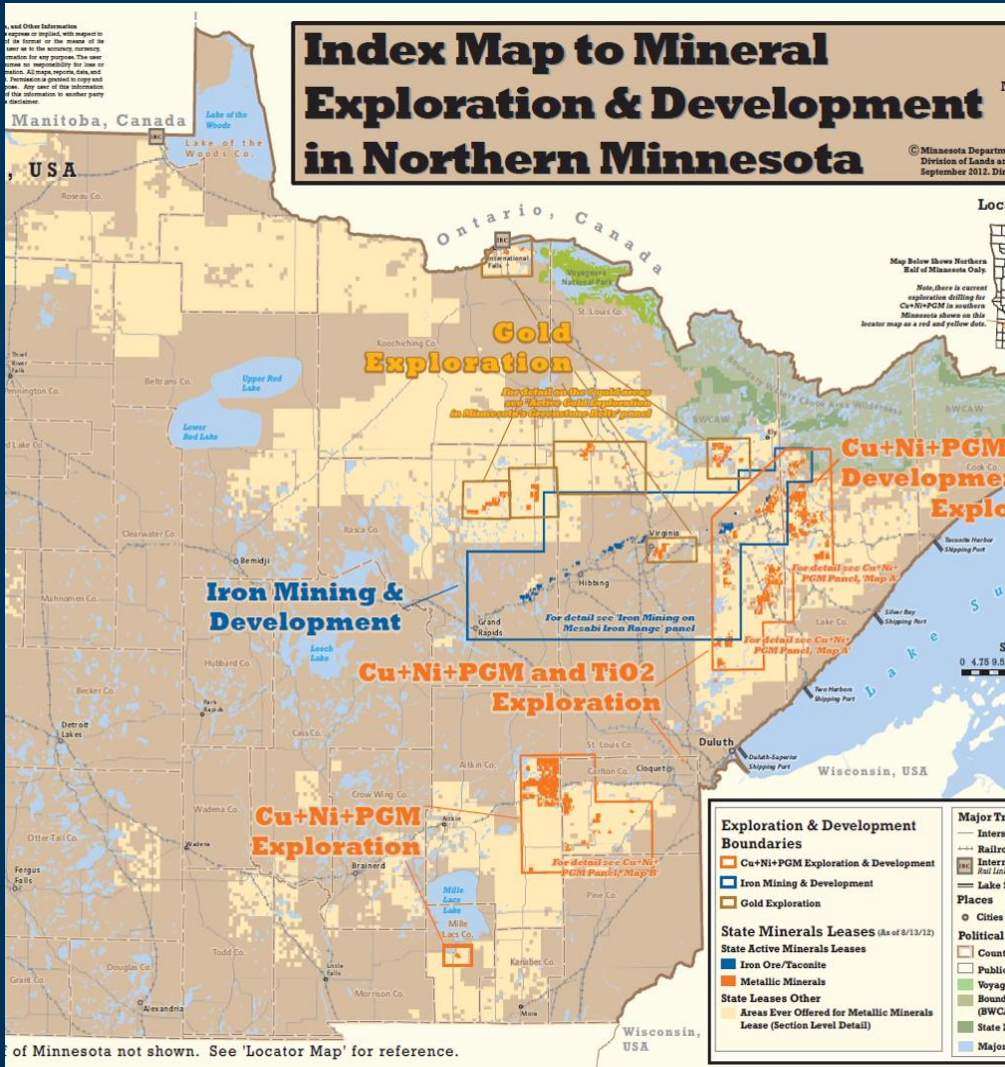


# FY18 – STRATEGIC PLANNING

- Divestiture Analysis
- Construction Aggregates
- Mineral Development



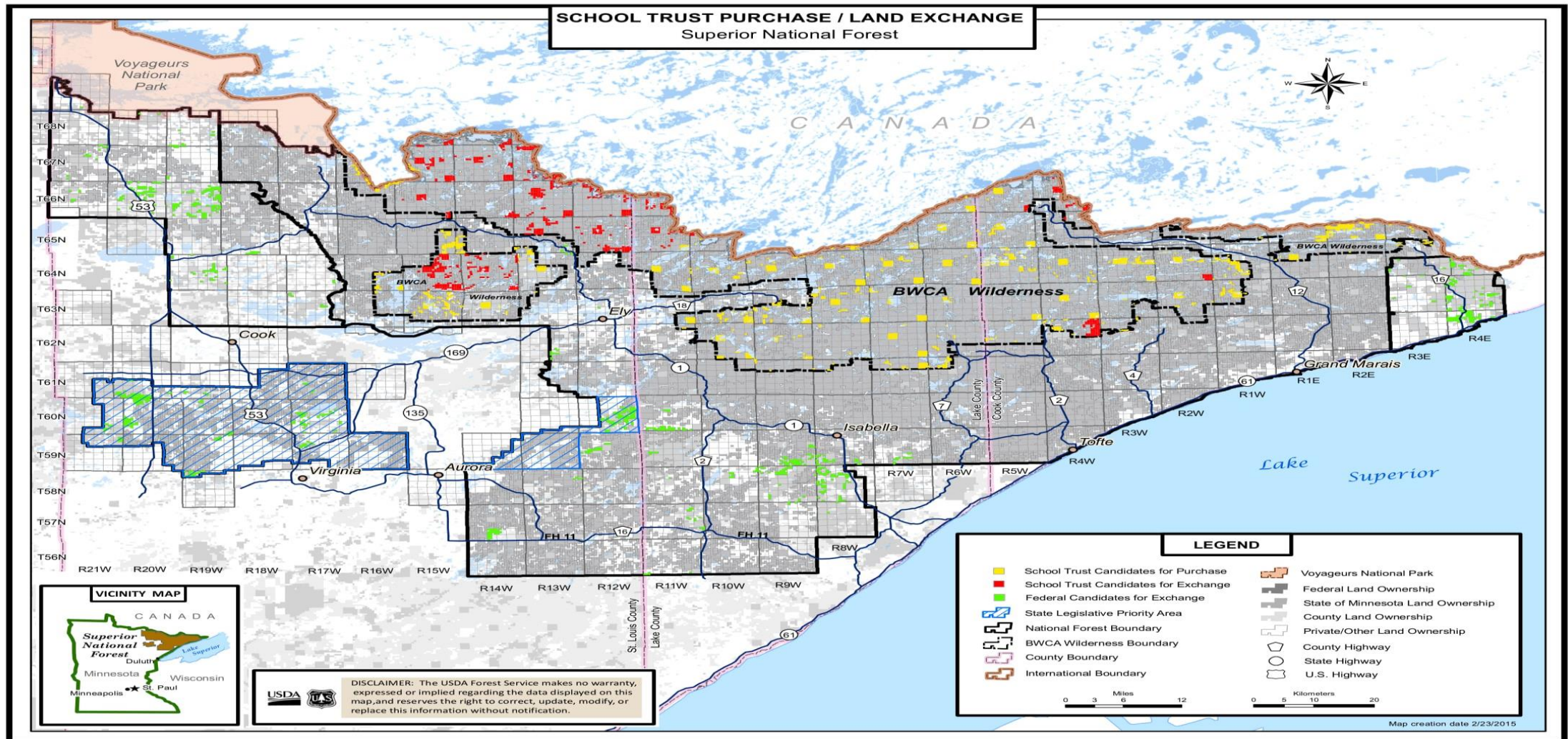
# LOOKING AHEAD – MINERAL DEVELOPMENT



- 2017 Nonferrous Metallic Mineral Lease Sale
- Mineral Management Zone
- Mineral Risk Assessment



# BWCAW PROJECT UPDATE



# Questions?

School Trust Lands Office

651-259-5955